

Model S7000L Automatic Liquid Cylinder Gas Changeover Manifold

Acme Model S7000L Automatic Liquid Cylinder Gas Changeover Manifolds are designed to eliminate system downtime by ensuring uninterrupted gas flow from two banks of cryogenic liquid gas cylinders. High and low pressure models are available.

Model S7000L manifolds are a more cost effective option for users who desire the performance features of the Model SLIQ manifolds, but do not require an enclosed unit or local indicating lights.

Specifications

Maximum Inlet Pressure350 PSIG
Maximum Outlet Pressure	
High Pressure Unit175 PSIG
Low Pressure Unit075 PSIG
Connections	
InletCGA
Outlet3/8" Tube Compression Fitting
Gauges	
Brass2 1/2"
Stainless Steel2"
Materials of Construction	
ComponentsBrass or Stainless Steel
Seats and SealsTeflon
PanelSteel Powder Coated White
Panel Dimensions ..	.14" H x 12" W (Other sizes available. Contact factory)



System Design

The **changeover regulator** incorporates two regulators within a common body and a single outlet. The design is such that with different set pressures, only one liquid cylinder bank can be discharged at a time. The unit's **line regulator** provides downstream adjustment for final pressure delivery. It features a "Gas Saver Circuit", which contains check valves, set just below the cylinder relief valve setting, to allow boiloff on the reserve bank to be utilized.

System Operation

Once liquid cylinders have been installed, the changeover manifold will first accept flow from the pre-determined primary bank. The S7000L's **control knob** points to the primary bank for easy identification. When the primary bank reaches a preset low pressure, the reserve bank automatically takes over.

Features and Benefits

Automatic ChangeoverEnsures continuous gas service
Modular ConstructionEase of mounting - even in compact spaces
Three-foot Stainless Steel Flexhose ..	.Hassle-free liquid cylinder connections
Line RegulatorProvides constant delivery pressure to point of use
Check ValvesPrevent backflow
One Knob OperationSaves time when changing cylinders
"Gas Saver Circuit"	prevents accumulated gas from being discharged and wasted

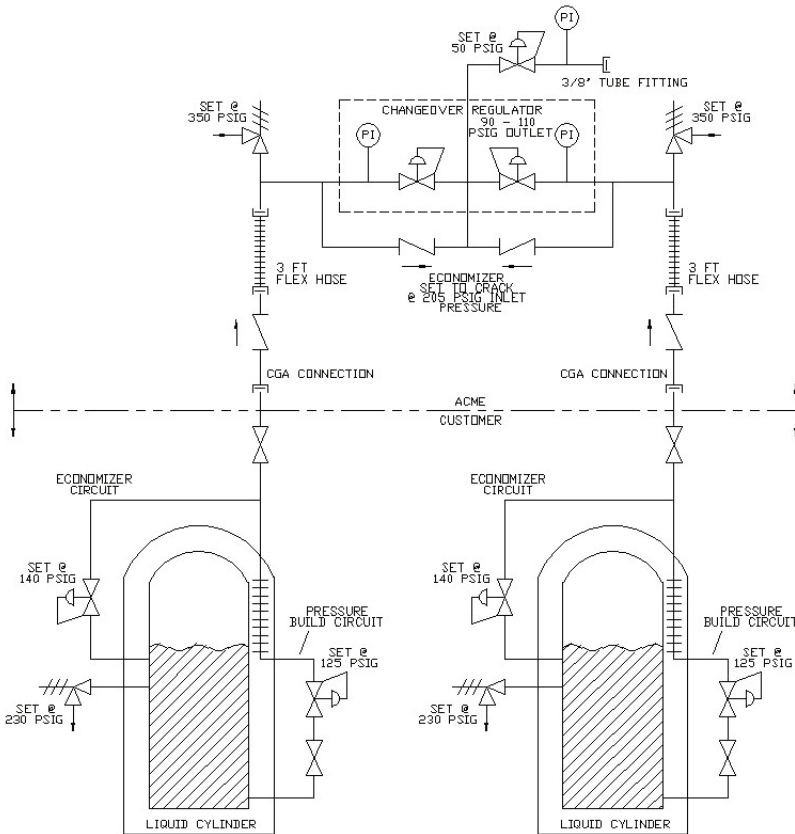
Optional Equipment

- Acme Model S504 Indicating Pressure Switch (IPS)
- Acme Model S300 Remote Alarm Box (alarm, lights and cable)
- Floor Stand

Model S7000L Automatic Liquid Cylinder Gas Changeover Manifold

Ordering Information

Model	Material	Total Number of Cylinders	Maximum Inlet Pressure	Options	Connections
S7000L	B = Brass S = Stainless Steel	2	A = 230 PSIG B = 350 PSIG	EL = Alarm IP = Indicating Pressure Switch FS = Floor Stand EF = Alarm and Floor Stand Blank = No Option	XXX (Replace "XXX" with appropriate CGA number.)



MODEL S7000L CHANGEOVER

Ordering Example

S7000LB2A-EL580 =

Model S7000L Automatic Liquid Cylinder Gas Changeover Manifold, brass for two liquid cylinders, with a maximum inlet pressure of 230 PSIG, and an alarm, equipped for inert service