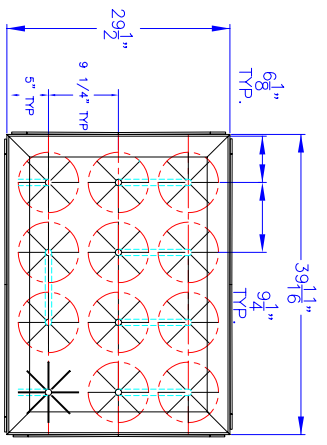


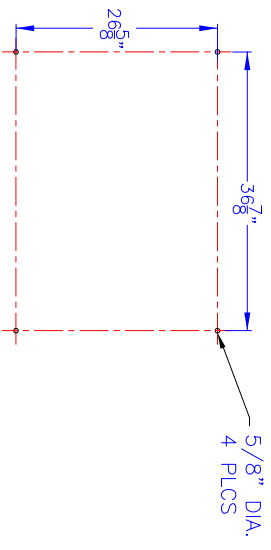
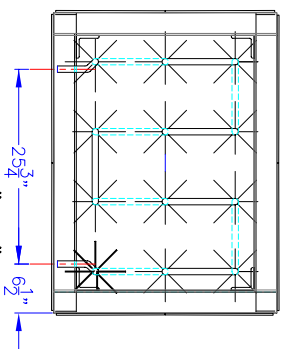
ZONE	REV	DESCRIPTION	E.O.	REVISED BY	DATE	APPR
-	-	ORIGINAL ISSUE		RW	12/23/08	

THIS DRAWING IS PROPRIETARY INFORMATION
 PROPERTY OF CRYOGENIC EXPERTS, INC.
 USE THIS FOR INFORMATION ONLY.
 DIMENSIONS AND CONNECTION LOCATIONS
 WILL CHANGE DEPENDING ON THE
 APPLICATION

PLAN VIEW

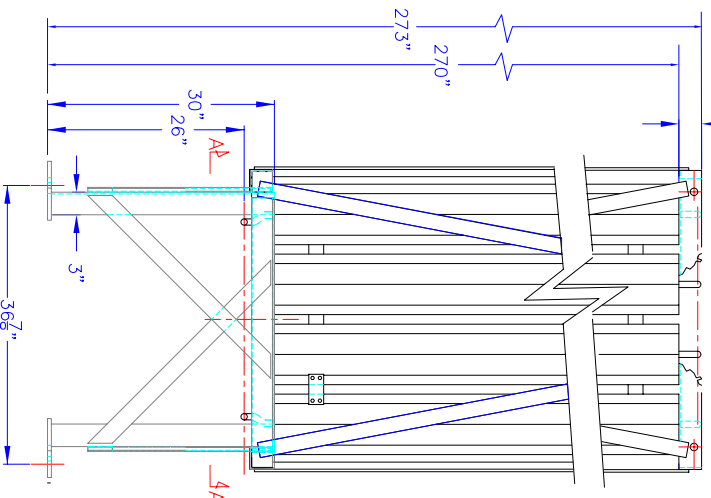


SECTION "A-A"

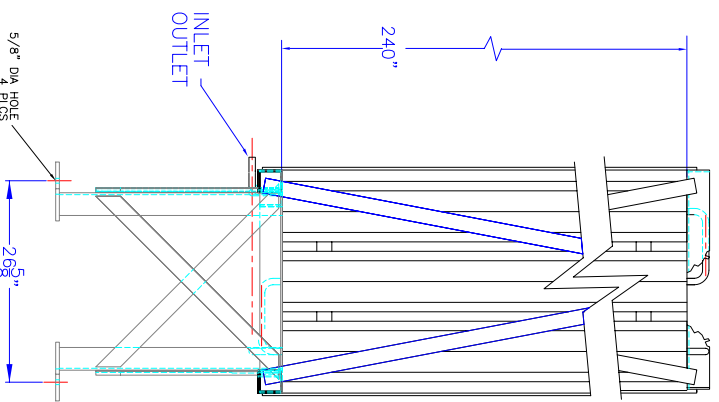


ANCHOR BOLT LAYOUT

ELEVATION VIEW



SIDE VIEW



		CRYOGENIC EXPERTS 531 Sandy Circle, El Rio, California 93036 Toll Free 1-800-FOR-CEXI OR Phone (809) 981-4500 Fax: (809) 981-4501	
UNLESS OTHERWISE NOTED: FRACTIONS 1/8" 1/4" 3/8" DECIMALS .001 .01 .03 .05 .10 .15 .20 .25 .30 .35 .40 .45 .50 .55 .60 .65 .70 .75 .80 .85 .90 .95 ANGLES ± 1° BREAK ALL SHARP EDGES DIMENSIONS ARE IN INCHES One Job No. -		APPROVALS DESIGN: KMK CHECKED: MANUF: RELEASED:	
TITLE AMBIENT VAPORIZER GENERAL ARRANGEMENT		DATE 12/23/08	
MODEL A12-20		SIZE FSCM NO. B155429	
SCALE 6X		DWG. NO. A12-20	
FILE -		JOB NUMBER	
REV. -		SHEET 1 OF 1	