

# ACME GENERATION TWO VARIABLE RATIO GAS BLENDERS

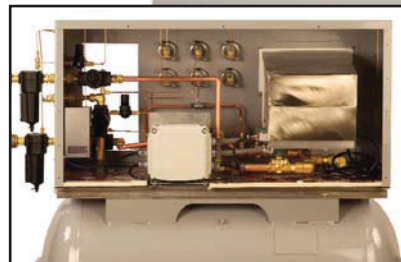
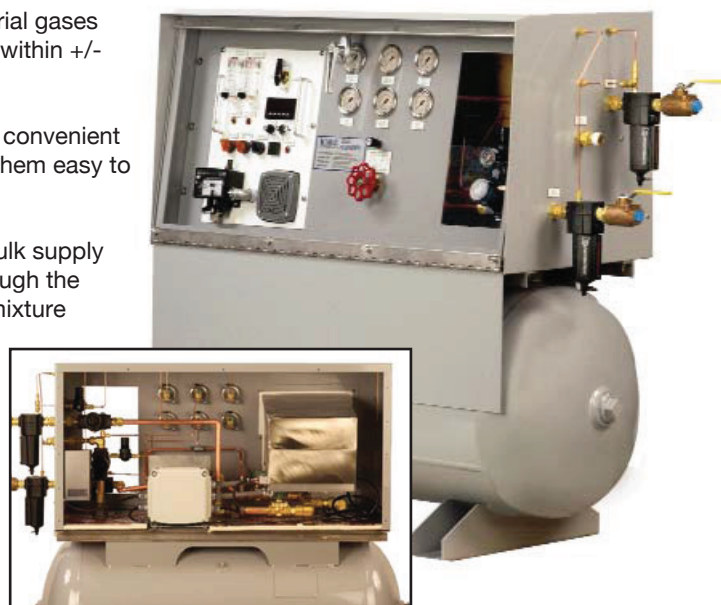
Variable ratio gas blenders are engineered for on-site mixing of industrial gases to the close tolerances demanded by the industry today. Accuracy is within +/- 2% of the maximum blend range.

Generation Two blenders come equipped with an integral analyzer. A convenient control panel display of pressures and gas mixture percentage make them easy to operate.

Supply gases can be furnished in cylinders, liquid cylinders or other bulk supply methods. The gases are blended as desired and then distributed through the pipeline system to welder stations or other process equipment. The mixture remains consistent regardless of withdrawal rate, as long as operating parameters remain constant. These gas blenders provide the ability to change blends when desired and offer significant cost savings over premixed gas cylinders.

Generation Two gas blenders are a good choice for customers who want solid performance for a variety of flow capacities at an economical price.

Acme maintains existing designs as standards for these gas blender models. We can also adapt our existing designs to fit users' requirements.



## Features

- Lockable Controls
- Indoor/Outdoor Construction
- Flow Capacities from 2,000 -10,000 SCFH
- Long Life Digital Pressure Switches
- Liquid-filled Pressure Gauges
- Alarm Horn with Acknowledge/Silence Button
- Tank Filling Indicator
- Front Control Panel Display
- 115 VAC, 60 Hz, 2.0 Amp Electrical Supply
- Electronic Pressure Switch (>3 times the life of standard switches)
- Front Access for All Controls
- Modular Alarm / Control Section
- User Programmed Hi/Lo Analyzer Alarm
- Tank Filling Indicator

Specifications	
Flow Capacity	See next page
Inlet Pressure	100-250 PSIG (6.9 to 20-6 bar)
Outlet Pressure	5-50 PSIG
Accuracy	± 2% (60-80° F)
Surge Vessel Size	See next page
Weight	See next page
Dimensions	See next page
Temperature Range	
<i>Outdoor Models</i>	10°F (-23°C) to 104°F (40°C)



# ORDERING INFORMATION GENERATION TWO VARIABLE RATIO GAS BLENDER

Series / Model	Nominal Capacity	Surge Tank Size	Weight (approx.)	Dimensions L x W x H	Connections
2,000	2,000 SCFH	30 Gallon	325 lbs.	40" x 36" x 24"	½" FNPT
5,000	5,000 SCFH	60 Gallon	525 lbs.	51" x 36" x 24"	¾" FNPT
7,500	7,500 SCFH	60 Gallon	525 lbs.	51" x 36" x 24"	¾" - 1" FNPT
10,000	10,000 SCFH	120 Gallon	725 lbs.	71" x 36" x 24"	1" FNPT

Model	Capacity	Type	Gas	Option(s)***
261 -	20 (2,000 Series)	1 - Indoor	1 - (0-30%) CO <sub>2</sub> /Ar*	001 - Dual Alarm Setpoints with Horn and Automatic Shutdown
	50 (5,000 Series)	2 - Outdoor	2 - (0-10%) O <sub>2</sub> /Ar*	002 - Quad Alarm Setpoints with Horn
	75 (7,500 Series)	3 - Explosion Proof	3 - (0-50%) He/Ar*	003 - Quad Alarm Setpoints with Horn and Shutdown on Two Alarm Points
	100 (10,000 Series)		4 - (0-50%) CO <sub>2</sub> /N <sub>2</sub> *	010 - Dual Alarm Setpoints with Horn and Inlet Pressure Alarm
			5 - (0-50%) N <sub>2</sub> /CO <sub>2</sub> *	011 - Dual Alarm Setpoints with Horn, Auto. Shutdown and Inlet Pressure Alarm
<p>* Gases marked with one asterisk are available with Indoor, Outdoor and Explosion Proof models.</p> <p>** Gases marked with two asterisks are available with Explosion Proof models only.</p> <p>*** Standard models come equipped with Dual Alarm Setpoints with Horn.</p>			6 - (0-15%) H <sub>2</sub> /N <sub>2</sub> **	
			7 - (0-10%) H <sub>2</sub> /Ar**	
			8 - (0-10%) H <sub>2</sub> /He**	
			9 - (0-50%) CO <sub>2</sub> /Miso**	
			8 - (0-30%) Ar/He**	

## Ordering Example

261-5022-002 =

5000 Series Gas Blender, Outdoor Construction, for a Mixture of Oxygen and Argon with Quad Alarm Setpoints and Horn