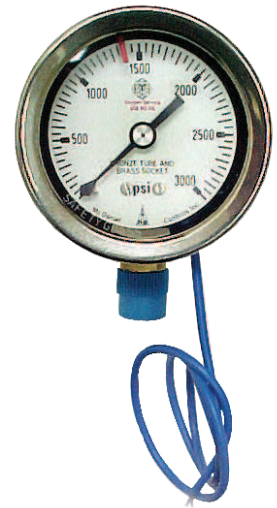


Indicating Pressure Switches

Acme Model S504 Indicating Pressure Switches are a combination switch and gauge used to activate alarm panels, which alert users when a cylinder or cylinder bank is empty and changeout must occur. They are available in brass or stainless steel models and are suitable for a variety of gas services.

The Switches are easily set by removing the lens cover and sliding the lever located at the outside of the dial to the desired setpoint. This feature provides permanent visual setpoint verification.

The Acme Model S504 is ideal for use with the Acme Model S300 Remote Alarm Box (above).



Specifications

Pressure Rating3000 PSIG

Connection..... 1/4" MNPT Bottom

Materials of Construction..... Brass or Stainless Steel

Dimensions2 1/2" Face

Electrical Contacts Reed Switch NC
(Normally Closed), 10 Watt Max. Power, 0.5 Amp Max. non-inductive, CE Approved

Ordering Information

<u>Model</u>	<u>Material</u>	<u>Gauge Range*</u>
S504	— B = Brass S = Stainless Steel	6 = 0-3000 PSIG

**Other gauge ranges available. Contact Acme for information.*

Ordering Example

S504-B6 =

Model S504 Indicating Pressure Switch,
brass, with a gauge range of 0-3000 PSIG